



exPressit™ Label Design Studio

quickSTART GUIDE

Memorex exPressit Label Design Studio allows you to professionally design and creatively personalize labels for discs, storage cases and the iPod™. With a number of easy-to-use design features, label designs can be completed in a simple process of clicking the mouse.

Minimum System Requirements

- Windows® 98SE, Me, 2000, or XP
- 64MB of RAM
- 64MB of Free Disc Space
- 200 MB for Image Library (optional)
- Internet explorer 5.0 or higher
- Recommended: Windows Media Player 9 or higher
- VGA or higher resolution (800x600 minimum resolution recommended)
- Windows Compatible Inkjet or Laser Printer

Installing the Software

- 1) Quit all open programs including anti-virus software, which may be running.
- 2) Insert the software installation disc into your CD/DVD drive and follow the onscreen instructions to install the software.

NOTE: If the software does not auto-run, then:

- a) Double-click on the "My Computer" icon on the Windows desktop.
- b) Double-click on your computer's CD/DVD drive.
- c) Double-click on "setup.exe" in the main directory.
- d) Follow the onscreen instructions to install the software.

Launching the Software

Double click the desktop icon or launch from the start menu:
 Start Menu> Programs> Memorex exPressit Label Design Studio> Memorex exPressit Label Design Studio

Quick Tips

- 1) Be sure to calibrate your printer before printing your first label. Calibrating your printer will help ensure that your designs print perfectly on the label sheet every time. See pg. 4 for steps on how to calibrate your printer. Always remember to save your settings.
- 2) Use the programmable options under the **Tools** menu to customize the software to your needs. You can:
 - Customize the appearance of the Label desktop.
 - Determine how you want the software to access the Internet to obtain album information for your music CDs.
 - Enter personal information to be automatically inserted into designs.
 - Customize the software startup screen. Choose from:
 - Last Used File or Template - shows the design you last had open
 - New Project Wizard - starts a new design
 - File Open Dialog - shows all your previously saved templates
 - Nothing - start from a blank screen
- 3) The Memorex exPressit tutorials located under the HELP section of the software are very beneficial in learning how to use the software.
- 4) Register the software online and receive information on:
 - Software updates and upgrades.
 - Pre-designed templates for use in the software.
 - Special offers on Memorex Label Refills, Jewel Cases, and more...

Creating a NEW label

Creating a new label with the exPressit Label Design Studio is simple and easy with the New CD Label Wizard. To create a new label, you must choose NEW on the command bar or from the file menu. The New CD Label Wizard is launched.

Choose from 15 different label templates
 There are label templates for:

- CDs
- DVDs
- Mini CDs/DVDs
- Jewel Cases
- DVD Storage Cases
- Business Card Discs
- iPods

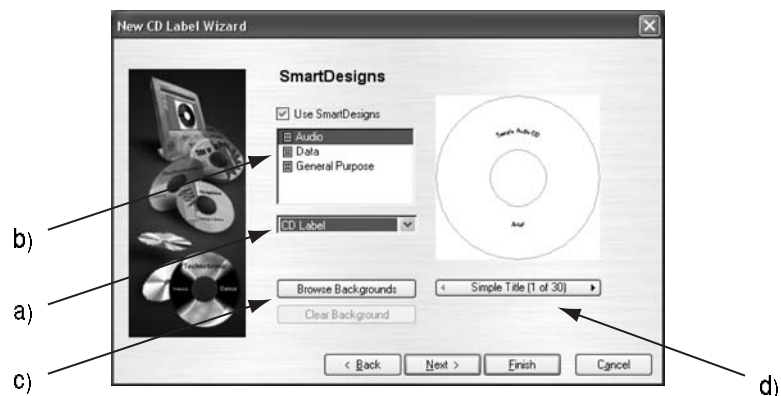


First, choose from the product types. Then, choose from the label products. Once label stock is chosen, click the **NEXT** button and the SmartDesigns process will begin. You can skip the SmartDesigns process by selecting **FINISH** to take you straight to the design screen.

SmartDesigns Template

The SmartDesigns Wizard allows you to choose from a number of “intelligent templates” built into the software. These pre-designed templates allow you to modify many different aspects of the design with just a simple mouse click. This process allows a quick professional label design every time.

NOTE: If you do not wish to use the SmartDesigns process, you can remove the check mark in the “Use SmartDesigns” box on the SmartDesigns Screen.



Step 1: Decide which label to create

- Select the label you wish to design. To select from the list on the left side of the screen, use the drop down arrow.
- Select a Genre for the label design. Types offered are Audio, Data, or General Purpose.

NOTE: Genre types will differ depending on the label type selected.

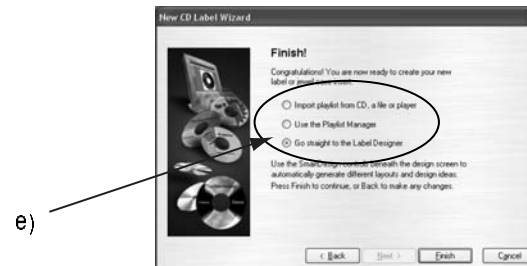
Step 2: Choose a background

- Use the **Browse Backgrounds** button and choose from over 1500 pre-designed backgrounds in the included image library or import your own images from a photo database.

AND/OR:

- Use the **Layout Variation Bar** on the bottom right and choose from a number of predetermined layouts for a quick label design.

Click the **NEXT** button to reach the final screen of the New CD Label Wizard.



Step 3: Import a playlist to finalize the design

- You have the option to import a playlist or go straight to the design screen.

NOTE: You will not see this screen if you choose “General Purpose” Genre for your label design.

Select **Finish** and your New CD Label Wizard is complete!

Once the New CD Label Wizard is complete, your newly designed label is ready to print or you can continue to edit your label design using the features of the exPress Label Design Studio.

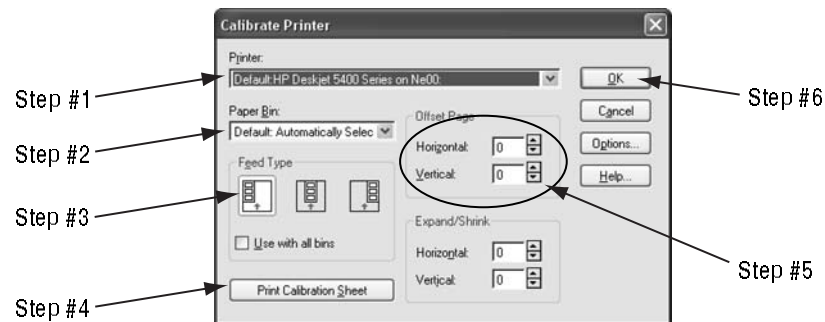
Printer Calibration

Memorex has included a print calibration tool that will help you with print positioning. This will help ensure your designs print perfectly on the label sheet.

NOTE: There must be at least 1 label design open to perform print calibration.

Under the **FILE** menu, click on **Calibrate Printer**.

Below is the screen that will appear and follow these steps:



- Select the printer you would like to calibrate.
- Select which “Paper Bin” you will be printing your labels from.
- Select the correct “Feed Type” of your printer - Left, Center, or Right.
- Click on the “Print Calibration Sheet” button to print a print calibration sheet on a plain sheet of paper.
- Follow instructions on that sheet and adjust the “Horizontal” and “Vertical” offset numbers.

NOTE: You may have to repeat the above steps as needed before accurately calibrating your printer.

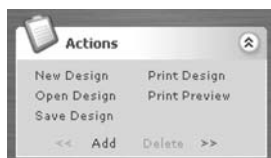
- 6) When you are satisfied with your printer calibration, click **OK** - this will save your settings and you are now able to print perfectly positioned labels every time.

NOTE: Printers may vary in how they handle different paper types. Even if you calibrate your printer, the paper may feed through the printer inconsistently causing misalignment. To reduce the effect of errors caused by printer inconsistencies, place images and text 3-5 mm away from the edge of the inner and outer edge of the label.

Using the Design Bar (on the left of the design screen)

Actions:

- Start a New Design or open an existing project.
- Click the Add button to add copies of your label to your print sheet.
- Use the << and >> buttons to scroll the label copies
- Click Save Design to save your design.



Backgrounds:

- Choose from over 1500 exPressit Backgrounds.
- Import your own background off the internet or from a database.
- Backgrounds are automatically applied to fit your label.



Pictures/Clipart:

- Browse through a number of clipart images.
- Choose from a number of different symbols.
- Use the Picture Touchup & Effects to enhance your design.



Text:

- Use a number of unique text effects to help put the finishing touches on your label design.
- Choose from circular, spoke, spiral, and drop shadow text effects to enhance your label design.
- A number of different fonts & colors are offered as well.



Playlists:

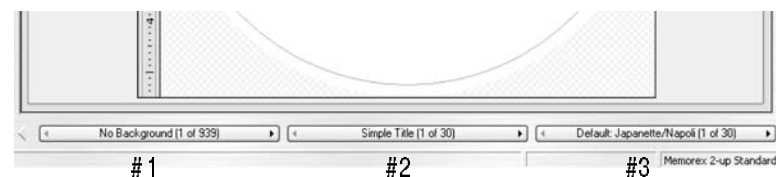
- Add your playlists or data file lists into your label design using the playlist manager.
- Import playlists from iTunes®, MusicMatch Jukebox®, Windows Media Player® and more.
- Edit playlists as needed.



Using the Variation Bar (on the bottom of the design screen)

- #1) Choose a **Background** - Offers a number of backgrounds in the software's library.
- #2) Choose a **Layout Style** - offers different title positioning, font type, and text effects.
- #3) Choose a **Font Style** - offers a number of different font combinations.

NOTE: Layout Styles and Font Styles will differ depending on the label template being used.



Using The Playlist Manager



The Playlist Manager allows you to edit and manage your playlists in your database. You can use existing playlists or create a new playlist for your label.

Use the below buttons to manage your playlists:

Import: To import playlists from a database, a CD, or a MP3 CD.

Add: To add songs to your existing playlists. This is great for creating your own playlists.

New: To start a new playlist from scratch.

Edit: To edit the selected playlist.

Delete: To delete the selected playlist.

Apply: To apply the selected playlist to the design.

Cancel: To quit the Playlist Manager.

Design Creation Tips and Tools

Object Mode:

Allows you to create, modify, delete, and position different elements of your design including:

- Graphic Objects
- Pictures
- Clip art
- Text Frames
- Tables

Text Mode: 

Allows you to enter, edit, delete and format text in Text Frames.

TIP: When you are in Object Mode, double-clicking on a text frame automatically switches you to Text Mode and puts the text cursor in the frame.

To CREATE Spiral, Spoke, or Circular Text:

- 1) Click **Add Circular Text** under the Text section on the Design Bar.
- 2) Under the Set Text tab, Select the **Circle Type** desired.
- 3) Select in the drop down menu – Spiral, Spoke, or Circle text.
- 4) Enter desired text in the text box and select **OK**.

TIP: Reduce the font size, first, before reducing the size of the text frame when adjusting circular, spiral, or spoke text.

To ADD Custom borders to your design:

Use the variation bar at the bottom of the design screen, scroll the layout styles (middle button), until you reach "Bleeding edge".

OR

- 1) Click **Add Circular Text**.
- 2) Under the Set text tab, select "Circular" under Circle Type.
- 3) Add desired border text in the text box.
- 4) Click on the Effects tab to adjust font color, background color, etc...

To SAVE a Label Design:

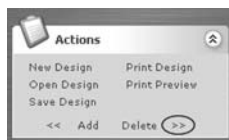
- 1) Click **Save Design** on the "Action" bar or **Save** in the File menu.
- 2) A dialogue box will appear – pick a filename and choose file type as **Design**.
- 3) Click Save once you decided on the filename and folder.

To OPEN a Label Design:

- 1) Click **Open Design** on the action bar or **Open** in the File menu.
- 2) Find the folder and file name under which you saved the design.
- 3) Click **Open** in the dialogue box to open the file.

To ADD a Blank Design:

- 1) Under the **Actions** bar, when on your last label design, Click >> .
- 2) The "Create a New Design?" screen will appear:
Click **Yes** to add a blank design to the project.
Click **No** to go back to the original design.



To ADD a Duplicate of Current Design:

Click **Add** under the **Actions** bar.

Use the << and >> buttons to scroll through designs.



Memorex exPressit™ Label Design Studio HELP Section:

- Feature-related tutorials take you step-by-step through many of Memorex's exPressit Label Design Studio capabilities, including creating a new label, working in the design area, creating text effects, working with playlists and printing.

NOTE: Label designs saved using Memorex exPressit S.E. 2.2 or older are not supported for use in Memorex exPressit Label Design Studio.

Help

The Help section of the software will provide you with tips of the day, general help tutorials, and a help link among other tools.

The Help menu provides access to:

- Memorex exPressit Tutorials
- Pop-up Help
- Tips of the Day
- Internet support, including News and Special Offers, Program Updates and Support Groups.

Technical Assistance

Should you require assistance or have questions regarding your Memorex exPressit Label Design Studio or LabelMaker Product, feel free to search for answers on our website at www.memorex.com or if you are residing in the USA or Canada, call us at 877-is it Live (877-474-8548).

Hours of operation are 9am-6pm pst., Mon.-Fri.

© 2005 Memorex Products, Inc.
Cerritos, CA 90703

Artwork # 53957876